

LINIA300

GREFET



THE SCIENCE
OF SYSTEM
WINDOWS

LINIA300

includes the option of a fly
MESH SHUTTER

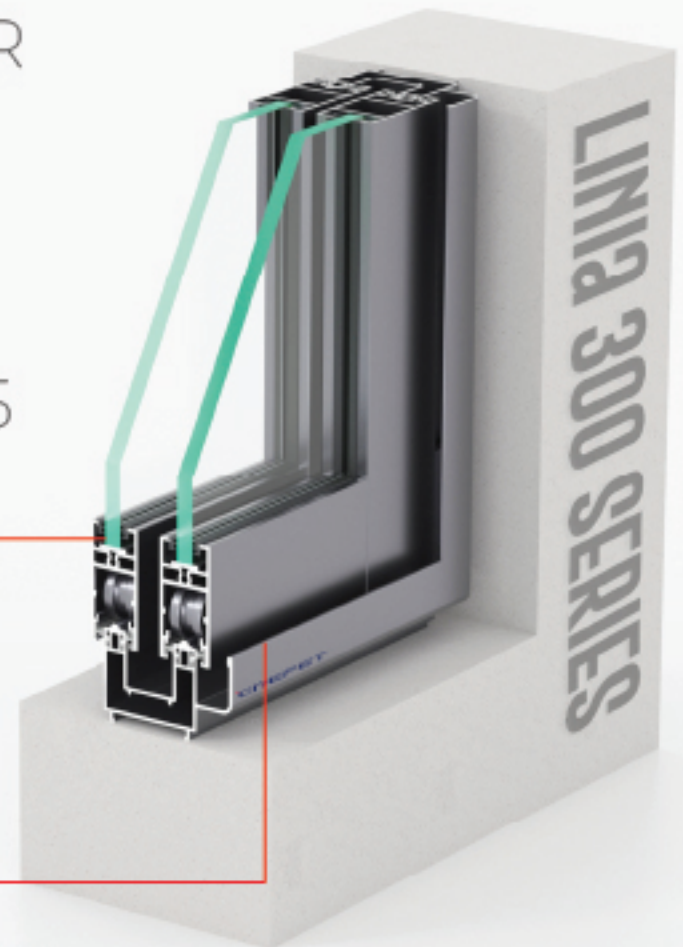
for enhanced functionality
and insect protection.

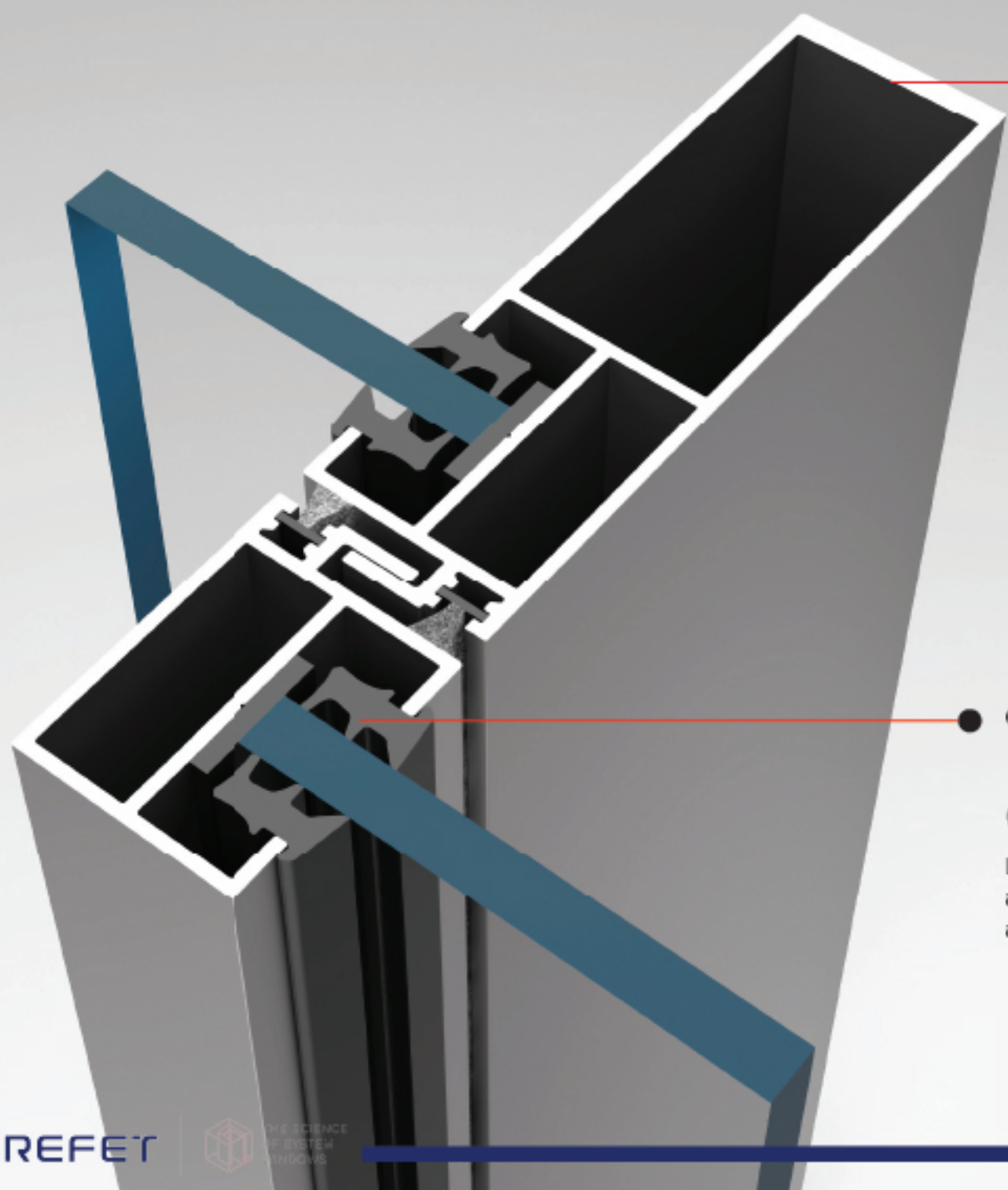
Available in a versatile range
of typologies, including
2, 2.5, 3, AND 3.5
SYSTEMS

to suit diverse design and
functional requirements.

Featuring a distinctive design,
LINIA300 incorporates

45-DEGREE
frame joints paired with
90-DEGREE SASH
intersections, delivering a refined
and modern aesthetic.





- Designed with **25MM INTERLOCK**, ensuring a streamlined appearance and optimal performance.

- Crafted with **PREMIUM-QUALITY EPDM**
LINIA300 ensures superior sealing and waterproofing performance across all applications.

LINIA300 accommodates glazing thicknesses of up to

21MM,

offering flexibility for various

**GLASS
SPECIFICATIONS.**



Offers a perfect balance of
versatility and sophisticated design,
making it an ideal solution for

**LARGE-SCALE
PROJECTS**
and developments.



FEATURES

TECHNICAL

Alloy grade	6063 - T6
Glazing	21 mm glass
Possible Typology Possibilities	2, 3, 4 & 6 sashes(+ mesh) 2 track, 2.5 track, 3 track & 3.5 track
Sections Frame	2 track 50 70 mm 3 track 87 108 mm
Frame depth	40 50 mm

FEATURES

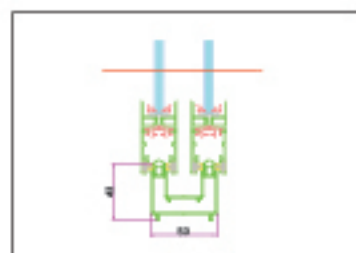
TECHNICAL

Sash	54 mm
Maximum weight per leaf	120 Kg
Central interlocking	25 mm
Permittable dimensions per leaf (W X H)	1200 mm X 2500 mm

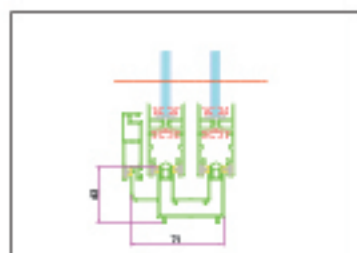
PROVEN INTERNATIONAL SUCCESS

Our system has demonstrated consistent effectiveness through global testing protocols.

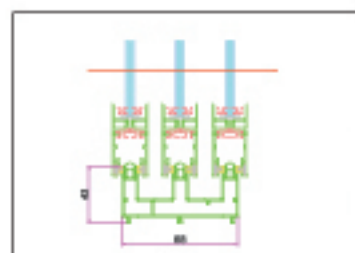
Transmittance	Uw from 3.0 (W/m ² K)
Maximum acoustic insulation Rw	20 dB
Air permeability	Test BS EN 1026: 2016 (Class 2)
Water tightness	Test BS EN 1027: 2016 (PA 300, Classification 4A)
Wind resistance	As per BS EN 12210 (2.4 KPA)



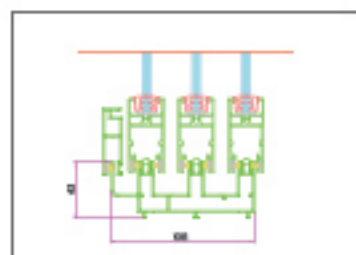
2T-Bottom Section



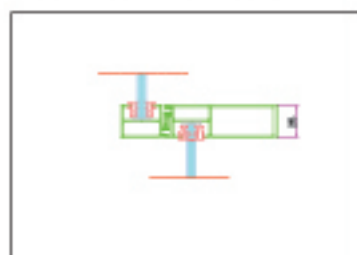
2.5T-Bottom Section



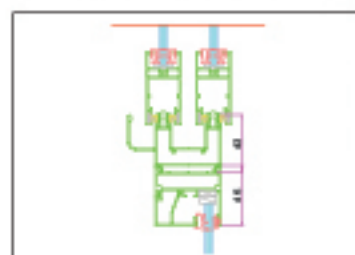
3T-Bottom Section



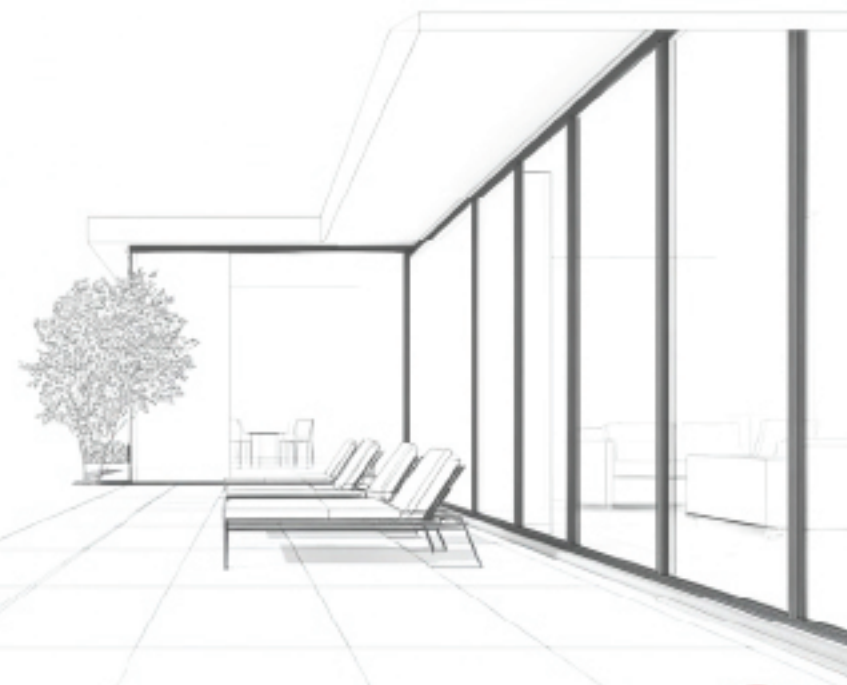
3.5T-Bottom Section



Interlock Section



2.5T +CS50



TYOLOGY

2 TRACK



2.5, 3, 3.5 TRACK



ENGINEERED
FOR
EFFICIENCY.
LARGE SCALE
IMPACT.

GRAFET SYSTEMS INDIA PVT LTD

Mumbai Office

912/46, Poisar Venus, Kandivali
East, Mumbai, Maharashtra
400101

Gurugram Office

90B, Delhi – Jaipur Expy, Udyog
Vihar, Sector 18, Gurugram, Sarhol,
Haryana 122008



www.grefet.com



info@grefet.com



+91 1800 202 3778

Disclaimer : Grefet Systems India Private Limited (GSIPL) reserves the right to change without notice the specifications, design, shape, size, and any other criteria related to the systems mentioned in the brochure, and also to discontinue systems and/or replace any part or accessory of any system. GSIPL also reserves the right to source and indent profiles, hardware, and accessories from any company if deemed fit.



[@grefetsystems](#)



[@grefetinternational](#)



[@GrefetSystems](#)



[@GrefetInternational](#)